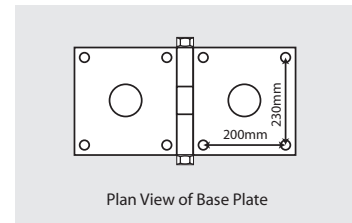
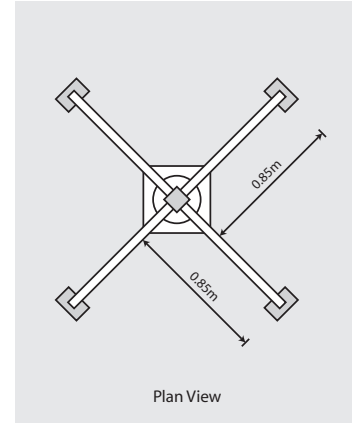
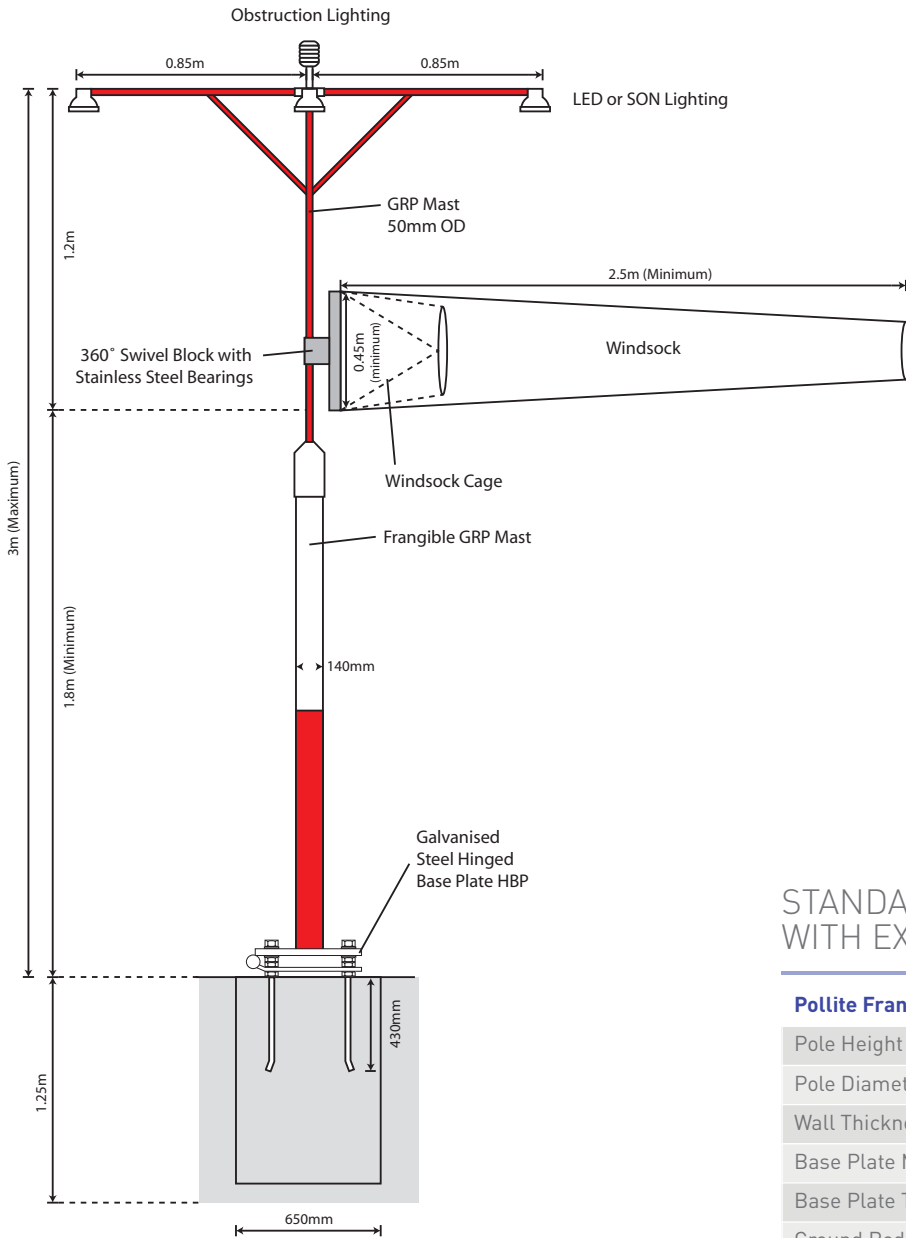


# L806 DESIGN WINDSOCK

## TECHNICAL DRAWING



### STANDARD WINDSOCK MAST WITH EXTERNAL LIGHTING

Pollite Frangible Windsock Masts	Millimetres
Pole Height	3000
Pole Diameter (at Base)	140
Wall Thickness	4
Base Plate Measurements	280x280
Base Plate Thickness	10
Ground Rod Length (Total)	500
Foundation Detail	1250x650x650

Technical drawing is for illustration purposes only